

SCR Oil Free Series

Rotary Screw Compressor

SCR Oil Free Rotary Screw Compressor



SCR Oil Free Rotary Screw Compressor

Air purity is critical in the pharmaceutical, chemical, dental and food manufacturing industries and requires 100% oil free compressed air to avoid any possible risk of contamination. The SCR Oil Free Rotary Screw Compressor is engineered to deliver 100% oil free compressed air.



SCR Oil Free Rotary Screw Compressors are of the highest quality, being awarded the highly sought after ISO Class 0 Air Certificate from the German governing body TÜV.

FEATURES INCLUDE:

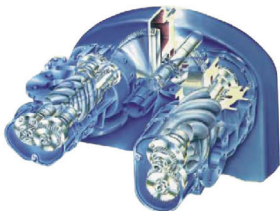
- 37 to 280kw units available
- 7 to 10b pressure range
- Energy saving micro controller
- German made GHH airend
- Siemens Electrical components
- Stainless steel piping
- European components
- Fixed speed/ variable/ water cooled



GHH Rand German Made Airend

Leading Technology

Two stage compression host includes two pairs of excellent performing rotors, durable ball bearing system, stainless steel air sealing and labyrinth seals. This unique design is time tested, reliable and efficient.



Two Stage Dry Oil Free Technology

The GHH Rand German oil free screw technology started in 1952 when its first oil free rotary screw airend was put into production. In 1984 they produced the first oil free 2 stage rotary screw airend which has been perfected over the years to be the most reliable and trusted oil free airend in the market today.

Double Seal

The GHH airend adopts a unique stainless gas and labyrinth seal technology. The double seal action ensures no contamination with the oil free compressed air.

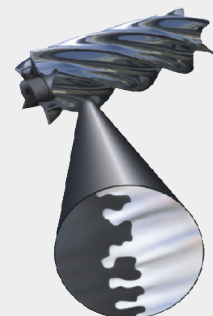
Stainless Steel Rotor

The pioneering use of stainless steel for the rotors ensures the life of the airend and the reliability of the air compressor.

GHH RAND

OIL FREE AIREND SUPER ULTRA COATING

All SCR oil free GHH airend rotors are coated with an ultracoat super surface adhesive which protects the rotors from the environment and temperature. This coating will provide high protection for the rotors, prolong it's service life and reduce energy consumption.



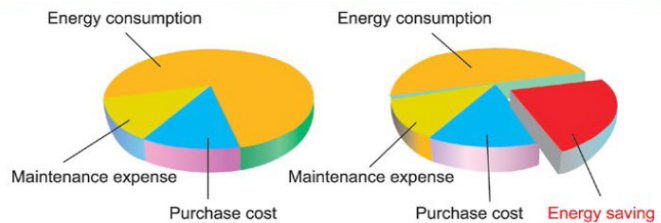
Variable Speed Advantages

All SCR oil free rotary screw compressors have a variable speed option which works by ramping up and down to coincide with your air demands and providing only the volume of air that is required.

Advantages:

- Energy savings of up to 40%
- Low power consumption
- Soft start (avoids high amp draw on start up)
- +0.1 bar constant line pressure
- No over pressure running
- Low speed oversized airennd
- No loss power transmission
- Low noise

Energy Saving



Intelligent Micro Controller

The intelligent patented micro plc controller is user friendly. It has signals for pressure, temperature and current, which monitor the running of the compressor. With a secured code, setting up or changing parameters in the system can be achieved easily using the buttons on the display.



THE DISPLAY HAS READINGS FOR:

- Hz & kW
- Service intervals
- Pressure
- Temperature
- Master/ slave operation
- Current
- Running hours
- Date and time
- Fault history
- Plus up to 13 different monitoring alarms

Components



SIEMENS

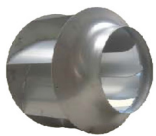
Siemens Electrical Components

Siemens components have a very high shock resistance and can handle unstable voltage. This ensures the long term stable operation of the compressor.



Stainless Steel Piping

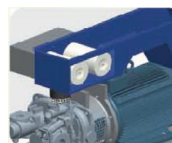
All compressed air piping is made from stainless steel to deliver premium air quality.



rosenberg

Rosenberg Centrifugal Fan

Rosenberg centrifugal fans are German made and are equipped with motor protection through thermal contacts.



Independent Inlet Suction Box

The independent inlet sound box ensures the air filter inlet temperature is the same as the ambient temperature.



Hydraulic Regulating Suction Valve

The inlet valve features a hydraulic regulating mechanism for maximum efficiency.



Venturi Tube

Venturi tube prevents air flow pulsation, and reduces high frequency noise and vibration.

Technical Specification

Model	KW	HP	Capacity(m3/min)	Pressure (BAR)	Dimension (mm)	Weight (KG)	Size																																																																																																																																				
SCR50GV - 7	37	50	6.3	7	2387*1250*1980	2387	DN50																																																																																																																																				
SCR50GV - 8			5.5	8				SCR60G - 7	45	60	7.6	7	2380*1580*1880	2700	DN50	SCR60G - 8	6.6	8	SCR75G - 7	55	75	9.6	7	2380*1580*1880	2750	DN50	SCR75G - 8	8.8	8	SCR75G-10	7.7	10	SCR100G - 7	75	100	12.5	7	2380*1580*1880	2800	DN50	SCR100G - 8	11.8	8	SCR100G - 10	10.7	10	SCR125WG - 7	90	125	16	7	2880*1880*1880	3400	DN65	SCR125WG - 8	13.6	8	SCR125WG - 10	13	10	SCR150WG - 7	110	150	19.5	7	2880*1880*1880	3500	DN65	SCR150WG - 8	18.2	8	SCR150WG - 10	17.5	10	SCR180WG - 7	132	180	23	7	2880*1880*1880	3600	DN65	SCR180WG - 8	22	8	SCR180WG - 10	19.5	10	SCR220WG - 7	160	220	26	7	2880*1880*1880	3650	DN65	SCR220WG - 8	25	8	SCR220WG - 10	23.5	10	SCR300WG - 7	220	300	39	7	3350*2280*2080	5000	DN100	SCR300WG - 8	36	8	SCR300WG - 10	32	10	SCR340WG - 7	250	340	45	7	3350*2280*2080	5200	DN100	SCR340WG - 8	43	8	SCR340WG - 10	38	10	SCR375WG - 7	280	375	48.5	7	3350*2280*2080	5500	DN100	SCR375WG - 8
SCR60G - 7	45	60	7.6	7	2380*1580*1880	2700	DN50																																																																																																																																				
SCR60G - 8			6.6	8				SCR75G - 7	55	75	9.6	7	2380*1580*1880	2750	DN50	SCR75G - 8	8.8	8	SCR75G-10			7.7	10				SCR100G - 7	75	100	12.5	7	2380*1580*1880	2800			DN50	SCR100G - 8				11.8	8	SCR100G - 10	10.7	10	SCR125WG - 7	90			125	16				7	2880*1880*1880	3400	DN65	SCR125WG - 8	13.6	8			SCR125WG - 10	13				10	SCR150WG - 7	110	150	19.5	7	2880*1880*1880			3500	DN65				SCR150WG - 8	18.2	8	SCR150WG - 10	17.5	10	SCR180WG - 7			132	180				23	7	2880*1880*1880	3600	DN65	SCR180WG - 8	22			8	SCR180WG - 10				19.5	10	SCR220WG - 7	160	220	26	7			2880*1880*1880	3650				DN65	SCR220WG - 8	25	8	SCR220WG - 10	23.5	10			SCR300WG - 7	220				300
SCR75G - 7	55	75	9.6	7	2380*1580*1880	2750	DN50																																																																																																																																				
SCR75G - 8			8.8	8																																																																																																																																							
SCR75G-10			7.7	10																																																																																																																																							
SCR100G - 7	75	100	12.5	7	2380*1580*1880	2800	DN50																																																																																																																																				
SCR100G - 8			11.8	8																																																																																																																																							
SCR100G - 10			10.7	10																																																																																																																																							
SCR125WG - 7	90	125	16	7	2880*1880*1880	3400	DN65																																																																																																																																				
SCR125WG - 8			13.6	8																																																																																																																																							
SCR125WG - 10			13	10																																																																																																																																							
SCR150WG - 7	110	150	19.5	7	2880*1880*1880	3500	DN65																																																																																																																																				
SCR150WG - 8			18.2	8																																																																																																																																							
SCR150WG - 10			17.5	10																																																																																																																																							
SCR180WG - 7	132	180	23	7	2880*1880*1880	3600	DN65																																																																																																																																				
SCR180WG - 8			22	8																																																																																																																																							
SCR180WG - 10			19.5	10																																																																																																																																							
SCR220WG - 7	160	220	26	7	2880*1880*1880	3650	DN65																																																																																																																																				
SCR220WG - 8			25	8																																																																																																																																							
SCR220WG - 10			23.5	10																																																																																																																																							
SCR300WG - 7	220	300	39	7	3350*2280*2080	5000	DN100																																																																																																																																				
SCR300WG - 8			36	8																																																																																																																																							
SCR300WG - 10			32	10																																																																																																																																							
SCR340WG - 7	250	340	45	7	3350*2280*2080	5200	DN100																																																																																																																																				
SCR340WG - 8			43	8																																																																																																																																							
SCR340WG - 10			38	10																																																																																																																																							
SCR375WG - 7	280	375	48.5	7	3350*2280*2080	5500	DN100																																																																																																																																				
SCR375WG - 8			48	8																																																																																																																																							
SCR375WG - 10			41	10																																																																																																																																							

Units available in standard fixed speed (G), variable speed (V) or water cooled (G) options

